



**BEIT  
MIDRASH:**  
ADULT  
ENGAGEMENT  
AT TEMPLE  
DE HIRSCH  
SINAI

**5778  
2017-2018**

**LEARN  
WITH  
US**









Dear Friends,

We are delighted that you have taken this brochure on Adult Jewish Engagement at Temple De Hirsch Sinai for 2017-2018/5778 on the Jewish calendar. Included here you will find an overview of Jewish learning and community building events that we have in mind for the year. As we move throughout the year, our hope is to add new opportunities that are responsive to the needs and interests within the community.

Temple is honored to be part of your Jewish journey! We are here to support you in growing your Jewish knowledge, skills, and enjoyment. We hope you will consider joining us for a class, lecture, and/or special event.

Perhaps you are looking to enhance your Shabbat service experience by learning more Hebrew, or you might be interested in making a renewed commitment to ongoing Torah study. Some may be looking for closer connections within the community, while others may want to learn how to incorporate more Jewish rituals into their homes and their family life. Our goal is to meet these needs and more. We are here to provide an entry point and access to Jewish living and learning for each and every Temple member.

Please be in touch with your ideas and suggestions for topics and issues you would like to explore together.

B'vracha, in blessing,



Rabbi Kate Speizer  
Adult Engagement Coordinator  
[kspeizer@tdhs-nw.org](mailto:kspeizer@tdhs-nw.org)  
206.693.3046



Rabbi Daniel Weiner  
Senior Rabbi  
206.323.8486





Join Temple's rabbis on Sunday mornings at our Seattle Campus for adult Jewish learning. Two, three, & four-week mini-courses offer timely and relevant knowledge through a Jewish lens and are open to all adults in the Temple community.

# SUNDAY STUDY IN SEATTLE

Sun • 10-11:45 AM  
Starting Oct 8, 2017  
Seattle Campus

Free. All are welcome!

Questions?  
Contact Rabbi Kate Speizer, Adult  
Engagement Coordinator,  
[KSpeizer@tdhs-nw.org](mailto:KSpeizer@tdhs-nw.org) or  
206.693.3046.

Begin your morning  
with school-wide *t'filah*  
(prayer service) in the Seattle  
Sanctuary at 9:30 AM before  
moving into the chapel  
for bagels, coffee, and  
discussion.



# SUNDAY STUDY IN SEATTLE COURSE SCHEDULE

Date	Lead	Title
8-Oct	Rabbi Kate Speizer	Holy Days: Sukkot
15-Oct	Rabbi Kate Speizer	Holy Days: Shavuot
22-Oct	Rabbi Kate Speizer	Holy Days: Shabbat
5-Nov	Rabbi Callie Schulman	Jewish Mindfulness: An Introduction to Mussar
12-Nov	Rabbi Callie Schulman	Jewish Mindfulness: An Introduction to Mussar
3-Dec	Rabbi Daniel Weiner	Jewish Diversity
10-Dec	Rabbi Kate Speizer	Jewish Diversity
7-Jan	—	Jewish Family Service Talks Tachlish
14-Jan	—	Limmud Seattle *at Shoreline Conference Center
21-Jan	Rabbi Aaron Meyer	200th Anniversary of the Reform Prayerbook
28-Jan	Rabbi Daniel Weiner	Machloket: Constructive Debate for Heaven's Sake
4-Feb	Rabbi Daniel Weiner	Machloket: Constructive Debate for Heaven's Sake
11-Feb	Rabbi Daniel Weiner	Machloket: Constructive Debate for Heaven's Sake
25-Feb	Rabbi Callie Schulman	Seasonal Living: Taking Cues from the Hebrew Calendar
4-Mar	—	Purim Celebration
11-Mar	Rabbi Callie Schulman	Seasonal Living: Taking Cues from the Hebrew Calendar
18-Mar	Rabbi Callie Schulman	Seasonal Living: Taking Cues from the Hebrew Calendar
25-Mar	Rabbi Callie Schulman	Seasonal Living: Taking Cues from the Hebrew Calendar
15-Apr	Rabbi Aaron Meyer	Reform Jewish Practice
22-Apr	Rabbi Aaron Meyer	Reform Jewish Practice
29-Apr	Rabbi Aaron Meyer	Reform Jewish Practice
6-May	Rabbi Aaron Meyer	Reform Jewish Practice





Temple De Hirsch Sinai and the Union for Reform Judaism sponsor Introduction to Judaism for the greater Seattle region. The course offers a foundation in Judaism in 18 sessions, covering topics from history to theology, holidays to prayer. This course is designed for individuals considering conversion to Judaism, interfaith couples and Jews-by-birth who want a refresher course.

# INTRO TO JUDAISM

Intro to Judaism is offered twice a year in the fall and spring on Thursdays from 7-9 PM on our Seattle campus. Tuition for the 18-session course is \$280 community/\$200 URJ congregation members. You will also be asked to purchase several books for the class. The tuition fee allows for either one or two people to attend. We encourage couples to attend together or singles to invite an interested friend.

To register and learn more about the class, please visit: <http://reformjudaism.org/IntroSeattle>. Please contact Rabbi Sabine Meyer, [smeyer@urj.org](mailto:smeyer@urj.org), at the Union for Reform Judaism if you have any questions about course registration or requirements. Rabbi Kate Speizer, Temple's Adult Engagement Coordinator, is also available to help.



# CLERGY INSTITUTE

Entering our 38th year, with the generous support of The Alfred and Tillie Shemanski Trust, the Family of Mila and Henry Eisenhardt, and Seattle University, we invite you to join us to continue a unique and enduring opportunity for interfaith study and discourse. Scholars, clergy of all faiths, and lay people are all welcome to register on our website. Previous speakers have included internationally acclaimed writer and scholar of religions Dr. Reza Aslan; internationally acclaimed Kabbalah scholar Professor Daniel C. Matt; and most recently, author, teacher and Bible translator Dr. Joel M. Hoffman.

**WATCH OUR WEBSITE FOR INFORMATION ON OUR 2018 CLERGY INSTITUTE SPEAKER!**

## SCHOLAR IN RESIDENCE WEEKEND

The entire community is invited to join us over Shabbat for further learning with our Clergy Institute scholar. Events include a Friday evening lecture over dinner (after services) and a Saturday morning study session before services.

**WATCH OUR WEBSITE FOR INFORMATION ON OUR 2018 SCHOLAR IN RESIDENCE WEEKEND SPEAKER!**

2015



Dr. Reza Aslan  
Photo Malin Fezehai  
Courtesy of New York  
Times

2016



Professor Daniel Matt  
Courtesy of CTNS.org

2017



Dr. Joel M. Hoffman  
Courtesy of Dr. Joel M.  
Hoffman

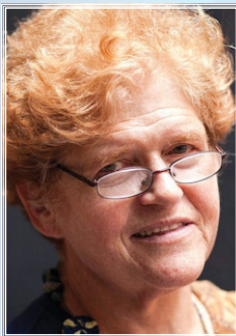


# KELLER FAMILY LECTURE SERIES

Established through the vision and generosity of the late Frances and the late Howard Keller, the Keller Family Lecture Series draws the best and the brightest national luminaries from the fields of art, culture, literature, Jewish life, and politics to the Greater Seattle Community for this annual speakers series. The talk is followed by a dessert reception and book signing opportunity. Free and open to the public; no RSVP required.

Previous speakers have included Holocaust historian Deborah Lipstadt; author, journalist and former Associated Press Middle East Correspondent Matti Friedman; New York Times writer David Brooks; and most recently, legal analyst for CNN and the New Yorker Jeffrey Toobin.

2012



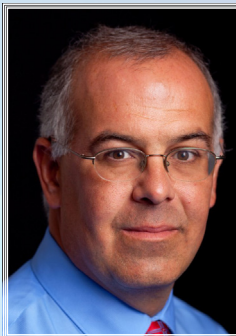
Deborah Lipstadt  
Courtesy of Jewish Journal

2015



Matti Friedman  
Photo Sebastian Scheiner

2016



David Brooks  
Photo Josh Haner  
Courtesy of New York  
Times

2017



Jeffrey Toobin  
Photo Jeremy Freeman  
Courtesy of Great Talent

**WATCH OUR WEBSITE FOR INFORMATION ON OUR 2018 KELLER SPEAKER!**



# NEW AND ONGOING PROGRAMS

## JUDAISM: DIVE DEEPER

In this 8-session course, join Temple's rabbis to deepen your understanding of Jewish prayer and Judaism in the home. Using *Mishkan T'fillah*, the Reform Movement's prayerbook, and Reuven Hammer's *Entering Jewish Prayer*, we will seek to better understand the prayers Jews have recited for generations, to learn the historical development of Jewish prayer and observance, to connect prayer to our everyday actions outside of the synagogue, and to explore elements of personal practice.

Thursday evenings on the Seattle Campus, 7-9 PM, Feb 8-March 29. To register, please visit: [templedehirschsinai.org](http://templedehirschsinai.org). \$36 for members/\$50 for community (includes a copy of *Entering Jewish Prayer*).

## LUNCH & LEARN AT WORK

Join us in various spots around Seattle for a bit of Jewish Learning over the lunch hour. This innovative adult education program welcomes all for an hour of conversation on current events as they relate to Jewish values. Lunch is provided by Temple De Hirsch Sinai and is made possible, in part, by a grant from the Jewish Federation of Greater Seattle. To schedule this at your workplace, please contact Rabbi Kate Speizer, [kspeizer@tdhs-nw.org](mailto:kspeizer@tdhs-nw.org) or 206.693.3046.

## CAFE IVRIT

Whether you're a coffee drinker or not, you are invited to come schmooze on the couches during this informal time with Temple members and staff. Wednesdays from 4:30-6 PM on our Bellevue campus whenever Hebrew school is in session.

## TORAH & TFI LAH

Our Shabbat morning begins at 9:30 AM in the Seattle Conference Room with a discussion of the week's Torah portion, facilitated by one of Temple's rabbis. At 10:30 AM, the congregation joins in prayer in the Seattle Chapel where the rabbi is joined by a song leader or cantorial soloist for the Shabbat morning shacharit service. Join us every Saturday morning in Seattle.

## SOCIAL ACTION

With your help, TDHS continues to be active and involved in our Seattle-area community. Our volunteers transform Jewish values into meaningful action through numerous projects each month. From food and supply collections to refugee resettlement, there are opportunities for all ages and various time commitments. Please visit [templedehirschsinai.org/volunteer](http://templedehirschsinai.org/volunteer) for current projects and/or contact Rabbi Aaron Meyer, [ameyer@tdhs-nw.org](mailto:ameyer@tdhs-nw.org) or 206.323.8486.



# LIMMUD SEATTLE

Limmud Seattle will be held in Seattle for the first time on January 13-14, 2018—on Saturday after Shabbat and all day Sunday—at the Shoreline Conference Center. Limmud means learning in Hebrew and the Limmud conference is just that: learning that emphasizes diversity, community, empowerment, and a commitment to respect. These values are at the core of what unites Limmud gatherings around the world. Each conference is guided by these values and we actively work to ensure that the values remain at the forefront of our efforts. To learn more, visit [limmudseattle.org](http://limmudseattle.org).

## PARTIAL LIST OF CONFIRMED PRESENTERS

### Ruth Calderon

is one of Israel's leading figures spearheading efforts to revive Hebrew Culture and a pluralistic Israeli-Jewish identity. In 1989, she co-established Beit Midrash Elul in Jerusalem. In 1996, in Tel Aviv she founded ALMA, Home for Hebrew Culture. Ruth is the author of "A Bride for One Night" (2001) and "Talmudic Alpha Beta" (2014). From 2013-2015, Ruth was a Knesset Member from the Yesh Atid Party, where she was Deputy Speaker. Ruth holds a Master of Arts and Ph.D. in Talmud from The Hebrew University of Jerusalem.


### Irving "Yitz" Greenberg

is an influential theologian and a seminal thinker on the Holocaust as a turning point in Jewish and Western culture and the State of Israel as the Jewish assumption of power and the beginning of a new era in Jewish history. He is currently writing a comprehensive theology of Judaism as the religion of *tikkun olam* seeking to perfect the world.

### Rivy Poupko Kletenik

is a Covenant Award Winner and is in her twelfth year as Head of School of the Seattle Hebrew Academy. Rivy has taught several long-standing weekly classes for the community including a Women's Talmud Class, now in its 24th year. Her column "What's Your JQ" appeared in the JT News and now runs in the new *Jewish in Seattle Magazine*.





Understand the deeper significance of blessings, prayers and biblical texts. Students will acquire intermediate reading and decoding skills in addition to learning what the words mean. The course emphasizes Classical Hebrew, the language of biblical and liturgical texts.

# HEBREW I

## KITAH ALEPH


**Thu • 7–8 PM**  
**Sep 28–Dec 14**  
**Seattle Campus**

Cost \$175. Register online at  
[TempleDeHirschSinai.org/Register](http://TempleDeHirschSinai.org/Register).

Questions? Contact Rabbi Kate  
Speizer, Adult Engagement  
Coordinator,  
[KSpeizer@tdhs-nw.org](mailto:KSpeizer@tdhs-nw.org) or  
206.693.3046.

An 11-session course  
to learn Hebrew reading  
and writing skills using the  
workbook  
*Aleph Isn't Tough.*





For those who have taken Aleph (Hebrew 1) and are ready to move on to next steps in understanding Hebrew, this is the class for you. Offered in response to expressed interest.

## HEBREW II

### KITAH BET & BEYOND

A 10-session course using the workbook *Aleph Isn't Enough*. Pre-requisite: Aleph-Bet letter recognition.

Questions? Contact Rabbi Kate Speizer, Adult Engagement Coordinator, [KSpeizer@tdhs-nw.org](mailto:KSpeizer@tdhs-nw.org) or 206.693.3046.



# PARENTING COMMUNITY & SUPPORT

Our professional team at Jennifer Rosen Meade Preschool and Temple provides the opportunity to connect with parents of children the same age as yours in a warm, welcoming learning environment. Through the following classes and programs, you will build lifelong friendships with others in our Jewish community.

For more information, please contact Sarah Sklare, Young Families Engagement Coordinator, at [ssklare@tdhs-nw.org](mailto:ssklare@tdhs-nw.org) or 206.693.3373 and/or Shannon Solomon, Early Childhood Education Director, at [ssolomon@tdhs-nw.org](mailto:ssolomon@tdhs-nw.org) or 425.559.2571.

## PEPS

- Partnership with Program for Early Parent Support, a Seattle nonprofit that has been building community for parents for 35 years
- Share parenting highs and lows with time to focus on the babies' development and a discussion topic
- 3 groups to choose from
  - Wednesdays 5:30-7:30pm, Bellevue Campus, October 25-January 31, February 28-May 30
  - Thursdays 5:30-7:30pm, Seattle Campus, October 26-February 1, March 1-May 31
  - Fridays 1-3pm, Bellevue Campus, October 20-February 2, March 2-June 1

## Kisses & Knishes (Bellevue Campus)

- Discuss topics such as how to soothe a fussy baby, how to solve feeding issues, what to do when your baby won't sleep
- 3-to-6-month group Thursdays, 12:30-1:30 pm from Oct 20 to Feb 2; Mar 2 to June 1
- 6-to-12-month group Thursdays 9:30-11:00 am from Oct 20 to Feb 2; Mar 2 to June 1

## Bagels & Blocks (Bellevue)

- Help your baby, 12-24 months of age, gain important socialization and exploration skills
- Connect with other families with young children
- Fridays, 9:45 to 11:15 am starting Sept 22; after mid-winter break, class will end at 11:45 AM

## Mini Mensches

- Sunday program for Pre-K kids & parents
- 5 sessions starting Oct 29, 9:30 – 11:30, offered on both campuses
- Meet other Jewish families raising young children
- Register on our website and/or contact Sarah Sklare for more details

## Temple's Jewish Parenting Book Club

Read, educate, analyze, & discuss Jewish parenting basics

- First Book: *The Blessing of a Skinned Knee* by Wendy Mogul
- Discussion facilitated by Temple's rabbis and educators
- Let Rabbi Kate Speizer know that you're interested so she can send you more details!



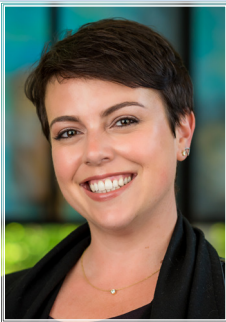
JENNIFER  
ROSEN MEADE  
PRESCHOOL  
Learn • Connect • Play • Explore



# AFFINITY GROUPS AT TEMPLE

## YOUNG ADULTS (20S AND 30S)

The Tribe at Temple De Hirsch Sinai is our point of connection for those in their 20s and 30s seeking to connect with Jewish community. We join together through meaningful social, educational and spiritual events for individuals and couples, Seattle natives and transplants, LGBT Jews, allies, and everyone in between. We are partners in an ever-growing Young Adult Engager Network of Jewish community organizations in the Greater Seattle area, in the spirit of collaboration and innovation that is so integral to our Seattle Jewish community. We offer monthly learning, social, and volunteer opportunities as well as a special Fourth Friday Shabbat (a relaxing, refreshing and re-soul-ifying Shabbat service and dinner on the fourth Friday of every month in Seattle).



Our leadership is comprised of those who have grown up at Temple De Hirsch Sinai, those who relocated to Seattle, recent college grads and graduate students, young professionals, those who are single and those who are married, too. We invite you to join us at an upcoming Tribe event and connect with the greater Seattle Jewish community.

To learn more, visit [www.TempleDeHirschSinai.org](http://www.TempleDeHirschSinai.org) or email Rabbi Callie Schulman at [cschulman@tdhs-nw.org](mailto:cschulman@tdhs-nw.org).





# AFFINITY GROUPS AT TEMPLE - CONTINUED

## SISTERHOOD (WOMEN OF REFORM JUDAISM)

Sisterhood's mission is to bring together the women of TDHS to serve our Temple, support our community and enrich our lives through Judaism, personal growth and friendship. We accomplish this mission through social and educational programs, fundraising, mitzvah projects, and involvement with Women of Reform Judaism. Our activities further our commitment to Jewish ideals, education, spirituality, social action and leadership development. To learn more, visit our website or email [sisterhood@tdhs-nw.org](mailto:sisterhood@tdhs-nw.org).

## BROTHERHOOD (MEN OF REFORM JUDAISM)

Are you a Temple De Hirsch Sinai man interested in having fun, making friends, and living a more connected Jewish life? Brotherhood's Mission: To build a spirit of friendship, fellowship, and community among its members. To strengthen the Jewish knowledge and commitment of our members. To espouse and embody the Jewish values of *Gemilut Chasadim* (acts of kindness), *Tzedakah* (charity), and *Tikkun Olam* (healing the world). To help plan, participate in, and support events, activities, and programs of and for the benefit of TDHS and of the Greater Seattle Jewish community. To learn more, visit our website or email [brotherhood@tdhs-nw.org](mailto:brotherhood@tdhs-nw.org).

## ENDLESS OPPORTUNITIES

Endless Opportunities, EO, is a community wide program offering a variety of activities tailored for Jewish adults ages 60+. Stimulating and enriching programs are held three times a month on a range of topics. Program formats include lectures, discussions, and outings to community arts, cultural and recreational organizations.

Not only is EO a place for lifelong learning, but it is a warm and welcoming space to socialize and connect with longtime friends while making new ones. Endless Opportunities is a partnership between Temple De Hirsch Sinai, Congregation Beth Shalom, Temple B'nai Torah, and Jewish Family Service.

Temple's Adult Engagement Coordinator, Rabbi Kate Speizer, is the Endless Opportunities Director. Please contact Rabbi Speizer to subscribe to EO's electronic updates and/or to make suggestions for EO programming at [KSpeizer@tdhs-nw.org](mailto:KSpeizer@tdhs-nw.org) or 206.693.3046.



206.323.8486  
[www.TempleDeHirschSinai.org](http://www.TempleDeHirschSinai.org)

1441 16th Avenue  
Seattle, Washington 98122

3850 156th Avenue SE  
Bellevue, Washington 98006



TEMPLE  
De Hirsch Sinai